

# State of Wyoming Corner Record

(In compliance with the *CORNER PERPETUATION AND FILING ACT*, Wyoming Statutes, 1997 Section 33-29-140 et. seq., and the Rules and Regulations of the Board of Professional Engineers and Professional Land Surveyors)

Reverse side of this form may be used if more space is needed.

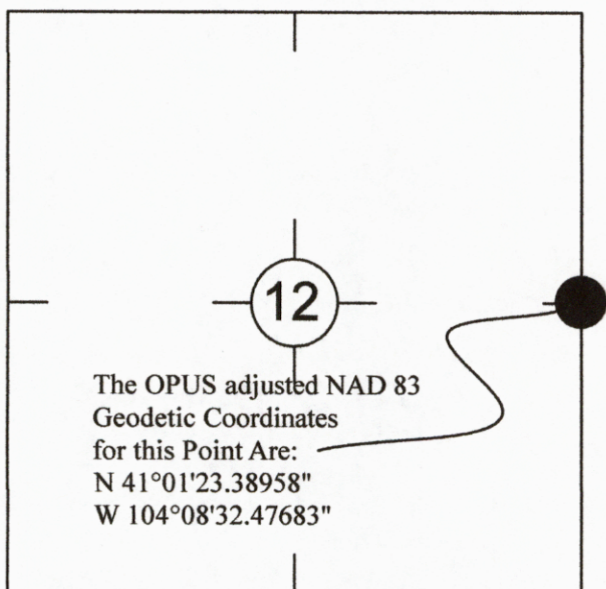
Record of original survey and citation of source of historical information (if corner is lost or obliterated). Description of corner monumentation evidence found and/or monument and accessories established to perpetuate the location of this corner. Sketch of relative location of monument, accessories, and reference points with course and distance to adjacent corner(s) (if determined in this survey). Method and rationale for reestablishment of lost or obliterated corner.

RECORD: Iron Post 3 Ft long, 2 inch in diameter, 2 1/2 Ft in ground with Brass Cap

FOUND: 1 -1/4" pipe as shown below

SET: Nothing

## Monument location



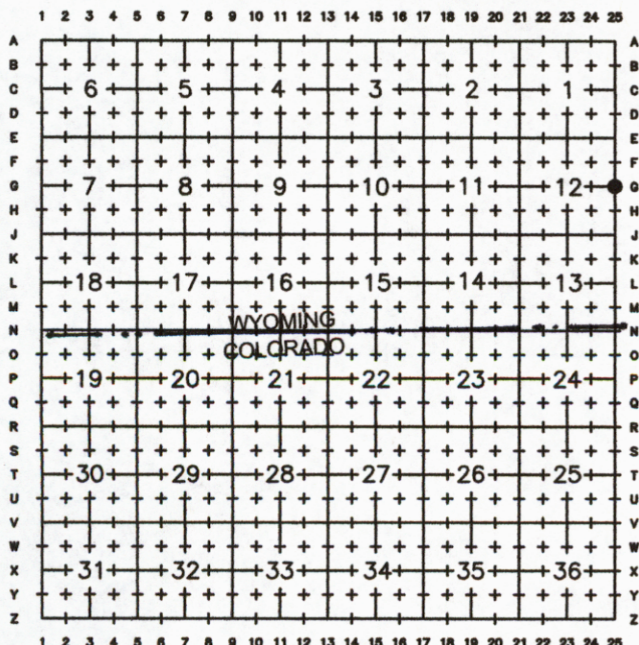
## Monument Inscription



Date of Field Work: 8/5/13

Office Reference: 2013-10

## Cross Index Plat



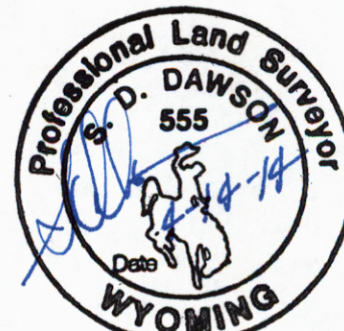
Firm/Agency, Address

CORNERSTONE SURVEYING COMPANY  
4005 SNYDER AVENUE  
CHEYENNE, WYOMING 82001-1170

This corner record was prepared by me or under my direction and supervision.

*SEAL & SIGNATURE*

Telephone Number: 307-421-9932



RECORDED 4/15/2014 AT 2:43 PM REC# 636014 BK# 2385 PG# 691  
 EBRA K. LATHROP, CLERK OF LARAMIE COUNTY, WY PAGE 1 OF 1

Corner Name Qtr S 12 / S 7

Section 12 / 7, T 12 N, R 61 / 60 W, 6th P.M. Cross-Index No.: G-25

County: Laramie Wyoming

SBRPEPLS/PLSW: March 1994; PLSW January 1998